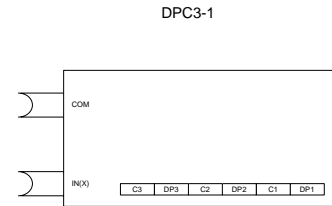
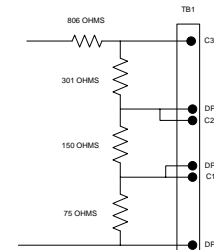


Specifications:**Operating Temperatures:****+32 to +122 Degrees F.****Power Supply:****DPC 3-1: None Required****DPC 3-2: 5 VDC ******** Note****5 VDC from Microzone II Controller
on-board supply may be used.****Schematics: DPC 3-1****Electrical Schematic:
DPC 3-1**

DPC 3 SERIES

The DPC-3 Series of Digital Input Cards are available in two varieties. Each DPC 3-1 Card allows for conversion of a single universal input channel to accept up to three voltage free contacts.

Each DPC 3-2 Card allows for conversion of a single universal input channel to accept up to three voltage free contacts of any mixture such as mercury wetted, Triac, etc., which may have inherently large and varying resistances. The DPC 3-2 Cards on-board circuitry allows the Microzone inputs to have a consistent input reading, unaffected by long lead lengths, varying resistances, etc.

The DPC-3 Series Card has been designed for the TAC Network 8000. Software loadables for these Input Cards are available on the TAC Web Site.

To Place an Order Please Call:

TAC
1354 Clifford Avenue
P. O. Box 2940
Loves Park, IL 61132
(815) 637-3000

Specifications are accurate and current at time of publication. BCS reserves the right to discontinue models or options, revise specifications or designs without prior notice. Applicability of product is the responsibility of the purchaser.

August 2007

DIGITAL POINT CARD SERIES

Schematics: DPC 3-2

DPC3-2

